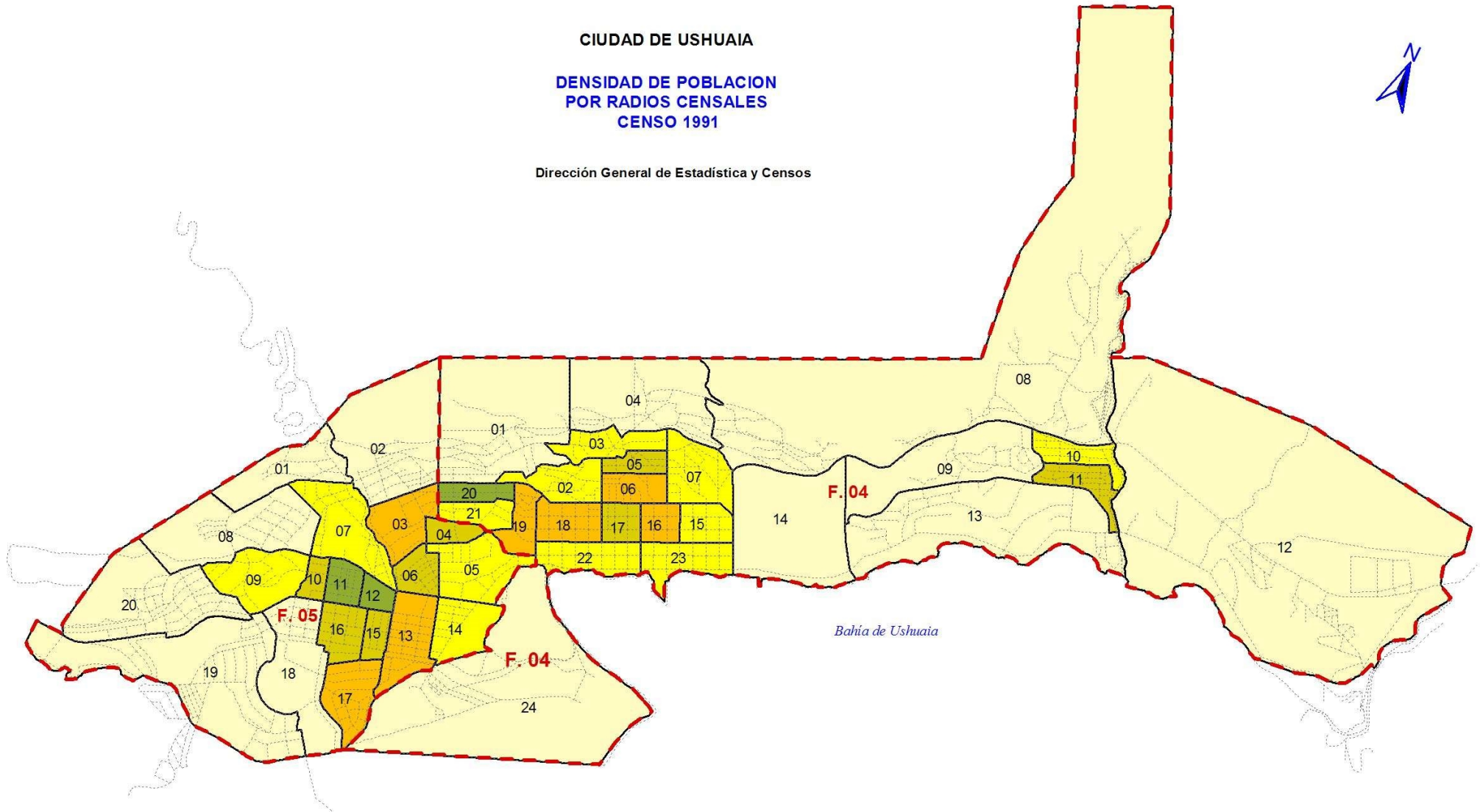


CIUDAD DE USHUAIA





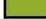
DENSIDAD DE POBLACION  
POR RADIOS CENSALES  
CENSO 1991

Dirección General de Estadística y Censos



REFERENCIAS

DENSIDAD (Hab/km<sup>2</sup>)

-  0 - 2500
-  2501 - 5000
-  5001 - 7500
-  7501 - 10000
-  10001 - 13000